



## DEPARTMENT OF PLANNING & HOUSING

515 Clark Avenue, P.O. Box 811, Ames, IA 50010  
Phone: 515-239-5400 ♦ Fax: 515-239-5404  
ckuester@city.ames.ia.us

December 8, 2009

TO WHOM IT MAY CONCERN:

This is to inform you that on ***Wednesday, December 16, 2009***, the City of Ames Planning and Zoning Commission will consider the request of HCS Builders to approve a revision to the Major Site Development Plan and Preliminary Plat for Somerset Subdivision located at 2630 Stange Road. The proposed Development Plan and Preliminary Plat create three lots for commercial buildings and one lot for shared parking on the existing vacant lot southeast of the intersection of Stange Road and Northridge Parkway.

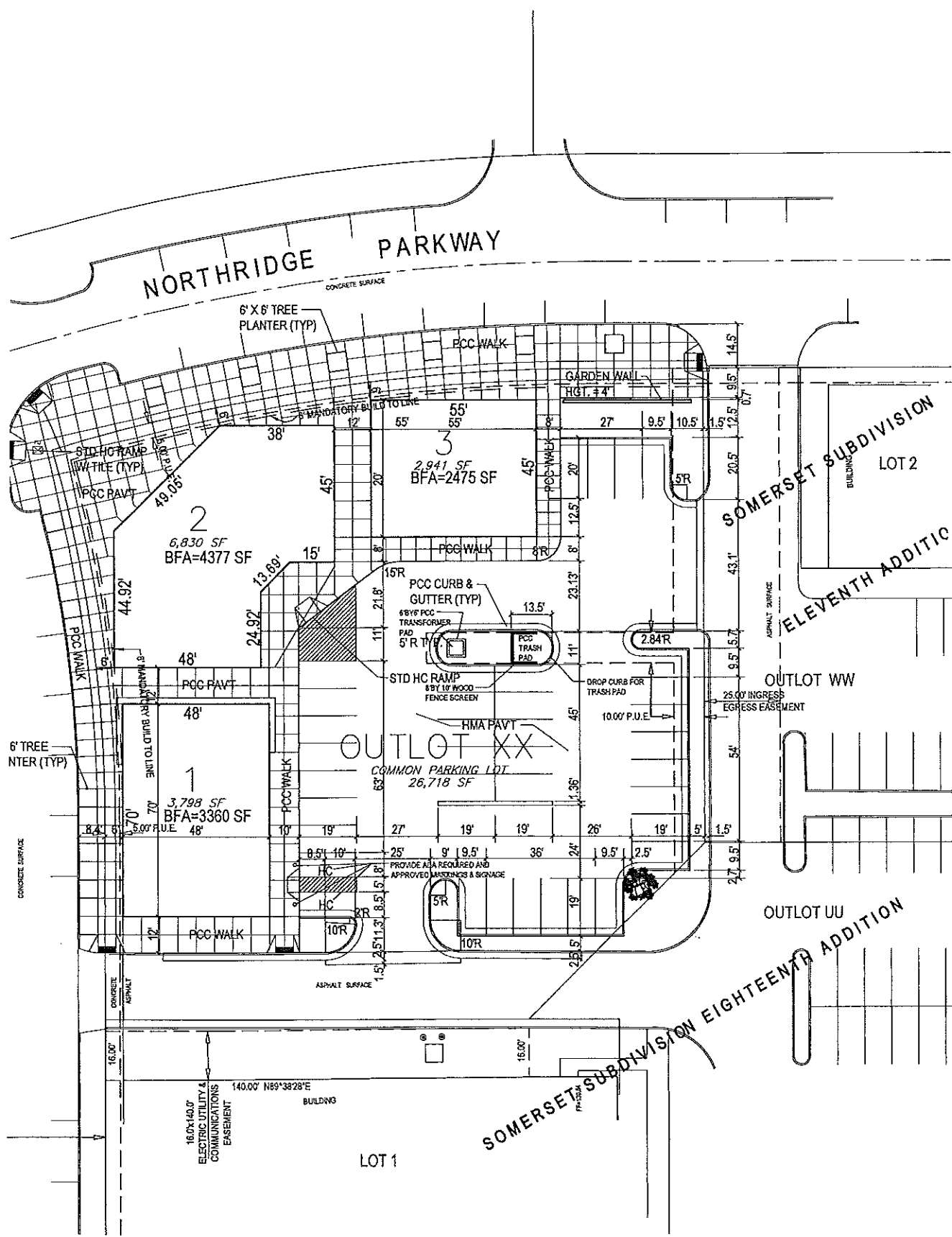
Since you are the owner of property within 200 feet of the proposed development, you are invited to attend the Planning and Zoning Commission meeting on ***Wednesday, December 16, 2009, at 7:00 p.m., in the Council Chambers*** located on the second floor of the Ames City Hall, 515 Clark Avenue. If you plan to attend, please enter the building through the main building entrance. As it is difficult to contact all interested persons, we respectfully ask you to inform others in your area.

If you have any questions or comments prior to the meeting, or if you cannot attend the meeting and wish to make your opinion known, please call the Department of Planning and Housing at (515)239-5400.

Sincerely,

Charlie Kuester  
Planner

CK\clh  
Enclosure



### CROSS EASEMENTS:

OUTLOT XX IS SET ASIDE FOR COMMON PARKING AREA  
SUBJECT TO CROSS EASEMENT PARKING AGREEMENT.  
CROSS EASEMENT AGREEMENTS WILL BE PROVIDED WITH THE  
FINAL PLAT SUBMITTAL.

### STREET TREES:

STREET TREES SHALL BE PROVIDED IN ACCORDANCE WITH  
THE SCHEDULE INCLUDED ON THE STREETScape PLAN SHEET  
IN THE MASTER PLAN FOR SOMERSET SUBDIVISION.

36 SPACES  
DAD AND NORTHRIDGE PARKWAY  
S  
SPACES

**Bishop Engineering**  
"Planning Your Successful Development"

3501 104th Street  
Des Moines, Iowa 50322-3825

Phone: (515) 276-4467 Fax: (515) 276-0217

Civil Engineering & Land Surveying Established 1959

**2630 STANGE ROAD  
AMES, IOWA**

## LAYOUT PLAN

MLand Projects 2009\090266\dwg\DIMENSION.dwg 11/11/2009 12:04:51 PM CST

REFERENCE NUMBER:  
030597  
040241  
080029

DESIGN BY:  
SMN

CHECKED BY:  
SKV

REVISION DATE:  
1. Per City Comments 10/20/09

PROJECT NUMBER:  
**090266**

SHEET NUMBER:

**C2.1**